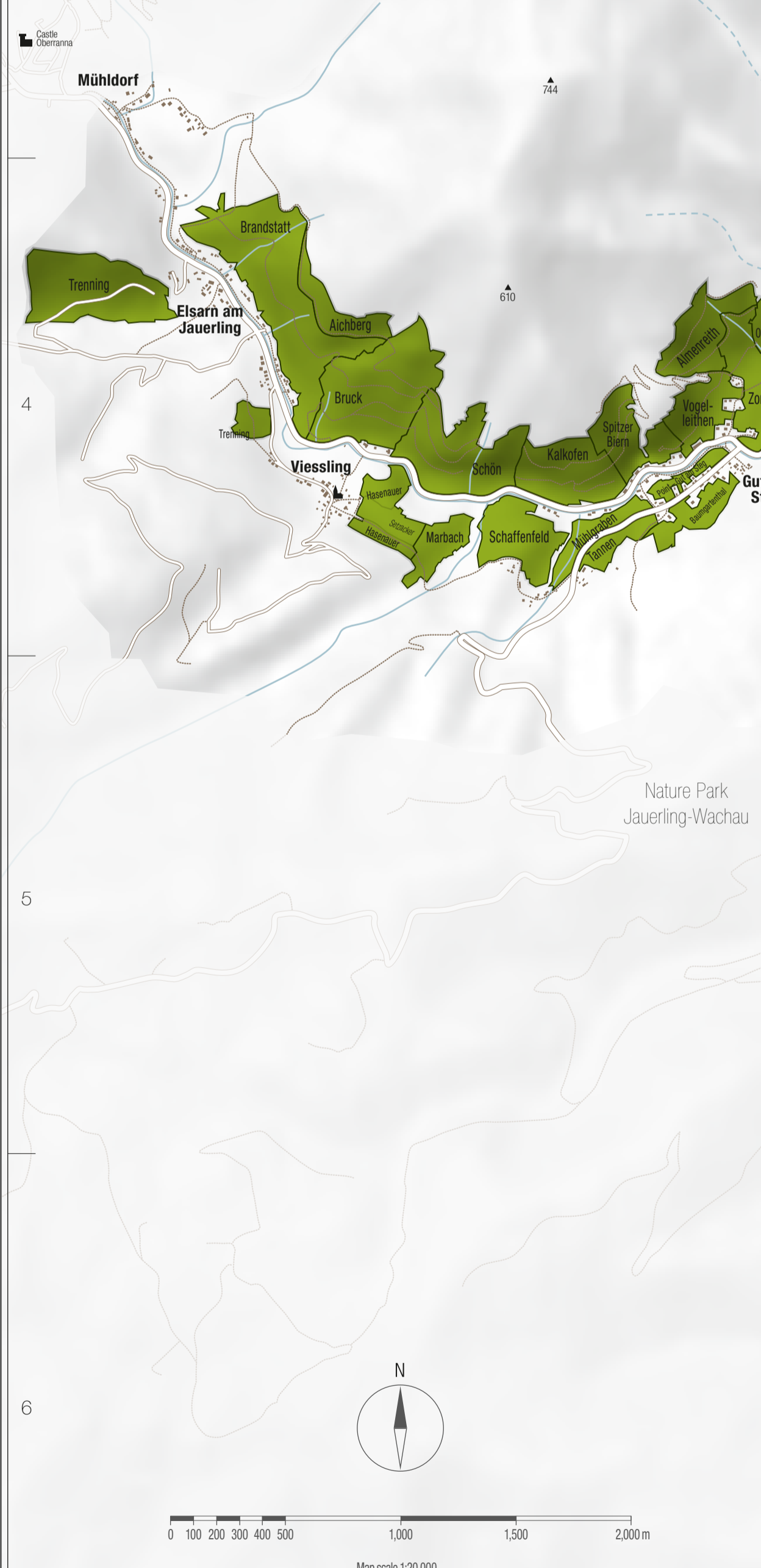
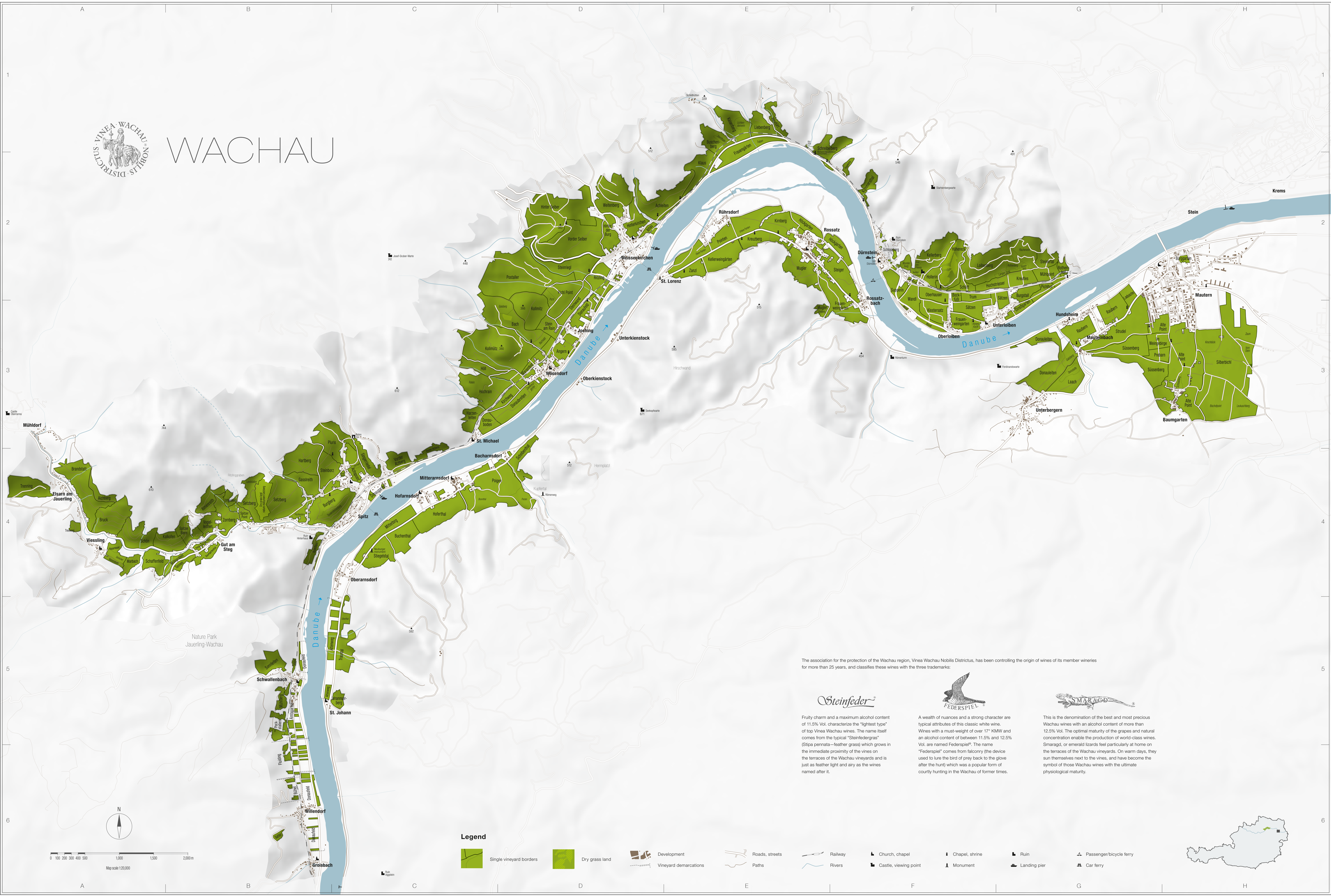




WACHAU



Legend

- Single vineyard borders
- Dry grass land
- Development
- Vineyard demarcations
- Roads, streets
- Paths
- Railway
- Rivers
- Church, chapel
- Castle, viewing point
- Chapel, shrine
- Monument
- Ruin
- Landing pier
- Passenger/bicycle ferry
- Car ferry

The association for the protection of the Wachau region, Vinea Wachau Nobilis Districtus, has been controlling the origin of wines of its member wineries for more than 25 years, and classifies these wines with the three trademarks:



Fruity charm and a maximum alcohol content of 11.5% Vol. characterize the "lightest type" of top Vinea Wachau wines. The name itself comes from the typical "Steinfedergras" (Stipa pennata—feather grass) which grows in the immediate proximity of the vines on the terraces of the Wachau vineyards and is just as feather light and airy as the wines named after it.



A wealth of nuances and a strong character are typical attributes of this classic white wine. Wines with a must-weight of over 17° KMW and an alcohol content of between 11.5% and 12.5% Vol. are named Federspiel®. The name "Federspiel" comes from falconry (the device used to lure the bird of prey back to the glove after the hunt) which was a popular form of courtly hunting in the Wachau of former times.



This is the denomination of the best and most precious Wachau wines with an alcohol content of more than 12.5% Vol. The optimal maturity of the grapes and natural concentration enable the production of world-class wines. Smaragd, or emerald lizards feel particularly at home on the terraces of the Wachau vineyards. On warm days, they sun themselves next to the vines, and have become the symbol of those Wachau wines with the ultimate physiological maturity.

